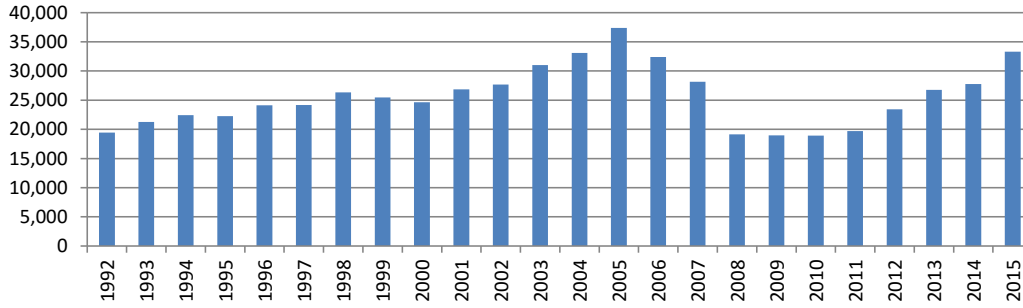


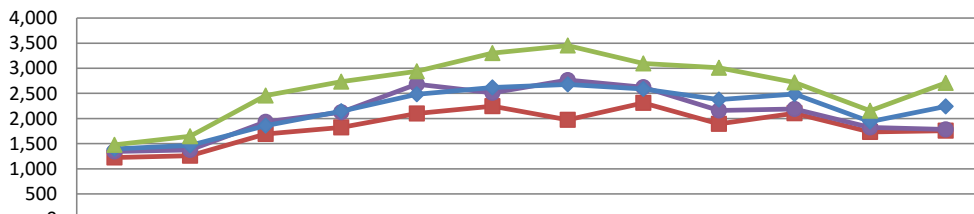
RMLS™ Closed Sales by Month and Year

Metro Portland, Oregon: Residential Listings

Closed Sales by Year: Metro Portland, Oregon



Closed Sales by Month: Metro Portland, Oregon



	JAN	FEB	MAR	APR	MAY	JUN	JUL	AUG	SEP	OCT	NOV	DEC
2012	1,224	1,262	1,694	1,822	2,098	2,244	1,973	2,311	1,894	2,103	1,733	1,760
2013	1,344	1,376	1,935	2,125	2,682	2,511	2,766	2,623	2,158	2,189	1,821	1,782
2014	1,396	1,467	1,857	2,143	2,483	2,617	2,678	2,586	2,378	2,487	1,937	2,239
2015	1,477	1,648	2,457	2,734	2,942	3,302	3,452	3,098	3,010	2,717	2,153	2,710

	JAN	FEB	MAR	APR	MAY	JUN	JUL	AUG	SEP	OCT	NOV	DEC	**Total
1992	1,163	905	1,287	1,563	1,568	1,756	1,623	1,452	1,486	1,560	1,534	1,723	19,439
1993	1,173	998	1,359	1,529	1,617	2,016	1,786	1,979	1,859	1,743	1,672	1,923	21,259
1994	1,366	1,145	2,090	2,065	2,005	2,012	1,810	1,862	1,706	1,722	1,513	1,610	22,444
1995	1,116	1,043	1,674	1,481	1,792	1,988	1,762	2,206	1,921	1,917	1,824	1,668	22,275
1996	1,396	1,345	1,812	1,945	2,071	1,980	2,089	2,148	1,887	2,088	1,768	1,694	24,135
1997	1,319	1,323	1,791	1,937	1,934	2,109	2,104	2,237	2,079	2,064	1,670	1,838	24,156
1998	1,233	1,328	2,068	2,074	2,173	2,408	2,292	2,171	1,993	2,071	1,928	2,046	26,351
1999	1,282	1,438	2,074	2,111	2,052	2,429	2,280	2,172	2,014	1,965	1,634	1,686	25,447
2000	1,154	1,440	1,945	1,786	2,113	2,262	1,916	2,226	2,066	1,951	1,761	1,702	24,656
2001	1,323	1,420	2,323	2,127	2,452	2,586	2,373	2,507	1,885	2,007	1,680	1,715	26,845
2002	1,505	1,617	2,052	2,152	2,541	2,434	2,337	2,369	1,993	2,227	1,957	2,079	27,695
2003	1,554	1,679	2,175	2,332	2,564	2,740	2,761	2,982	2,886	2,741	2,148	2,167	31,013
2004	1,301	1,654	2,397	2,699	2,833	3,408	3,261	3,062	2,797	2,764	2,426	2,568	33,075
2005	1,843	1,995	3,220	3,051	3,269	3,557	3,258	3,690	3,291	2,922	2,623	2,536	37,403
2006	1,760	2,038	2,797	2,558	3,054	3,352	2,713	2,939	2,506	2,503	2,163	2,120	32,403
2007	1,594	1,899	2,775	2,594	2,802	2,731	2,624	2,554	1,866	1,864	1,733	1,496	28,173
2008	1,085	1,384	1,691	1,582	1,863	1,877	1,831	1,770	1,640	1,465	1,041	987	19,132
2009	732	857	1,184	1,302	1,427	1,776	1,988	1,841	1,800	2,009	1,795	1,506	18,955
2010	986	1,015	1,799	1,941	2,050	2,012	1,412	1,381	1,399	1,292	1,279	1,462	18,926
2011	1,035	1,074	1,615	1,611	1,742	1,958	1,709	1,805	1,586	1,474	1,521	1,612	19,682
2012	1,224	1,262	1,694	1,822	2,098	2,244	1,973	2,311	1,894	2,103	1,733	1,760	23,438
2013	1,344	1,376	1,935	2,125	2,682	2,511	2,766	2,623	2,158	2,189	1,821	1,782	26,782
2014	1,396	1,467	1,857	2,143	2,483	2,617	2,678	2,586	2,378	2,487	1,937	2,239	27,752
2015	1,477	1,648	2,457	2,734	2,942	3,302	3,452	3,098	3,010	2,717	2,153	2,710	33,307

**If you add up each month, it will not equal the total, because the months reflect numbers reported in that month while the year total reflects a count that was taken at the end of the year. While we require status changes to be made within 72 hours, this does not always happen and can lead to this discrepancy.